

# **Communities, Transport and Environment Policy Development and Scrutiny Panel**

## **Transport Strategies - Updated**

Peter Dawson Group Manager  
Transport Policy

## Item 9

### Transport Strategy

- Bath Transport Strategy
- Keynsham Transport Strategy

## Item 10

### WoE Transport Study update

# Bath Transport Strategy

Adopted November 2014

## 14 Policy areas within the Strategy

- Walking
- Inclusion and access for all
- Traffic Management and Air Quality
- Cycling
- Enterprise Area
- Off Street Parking
- Park and Ride

# Bath Transport Strategy

## 14 Policy areas within the Strategy (continued)

- Bus Network
- Travel Plans
- Taxis and River Taxis
- Rail
- Coaches
- Heavy Goods Vehicles
- River

# Keynsham Transport Strategy

Agreed by Cabinet in July 2015

To minimise the negative effects of traffic congestion in and around Keynsham and ensuring it retains its independence and its separate identity within an attractive rural setting by becoming a more sustainable, desirable and well-connected place in which to live and work.

# Keynsham Transport Strategy

Since then we have:

1. Reviewed Pedestrian and Cycle Routes Outside the Town Centre
2. Keynsham High Street Public Realm
3. Reviewed Future Car Parking Demand
4. Avon Mill Lane/A4 Link Road Assessment

# Keynsham Transport Strategy

1 – 3 are published on the Council's web site as part of the Evidence/Background to the Placemaking Plan.

4. Is still work in progress

## Item 10 - Joint Spatial Plan and Transport Study (JSPTS)

- What is the JSPTS?
- Update on Consultation?

### Next steps

Joint Study to bring developments across WoE in a planned and co-ordinated up to 2036.

Need to get these long term decisions right!

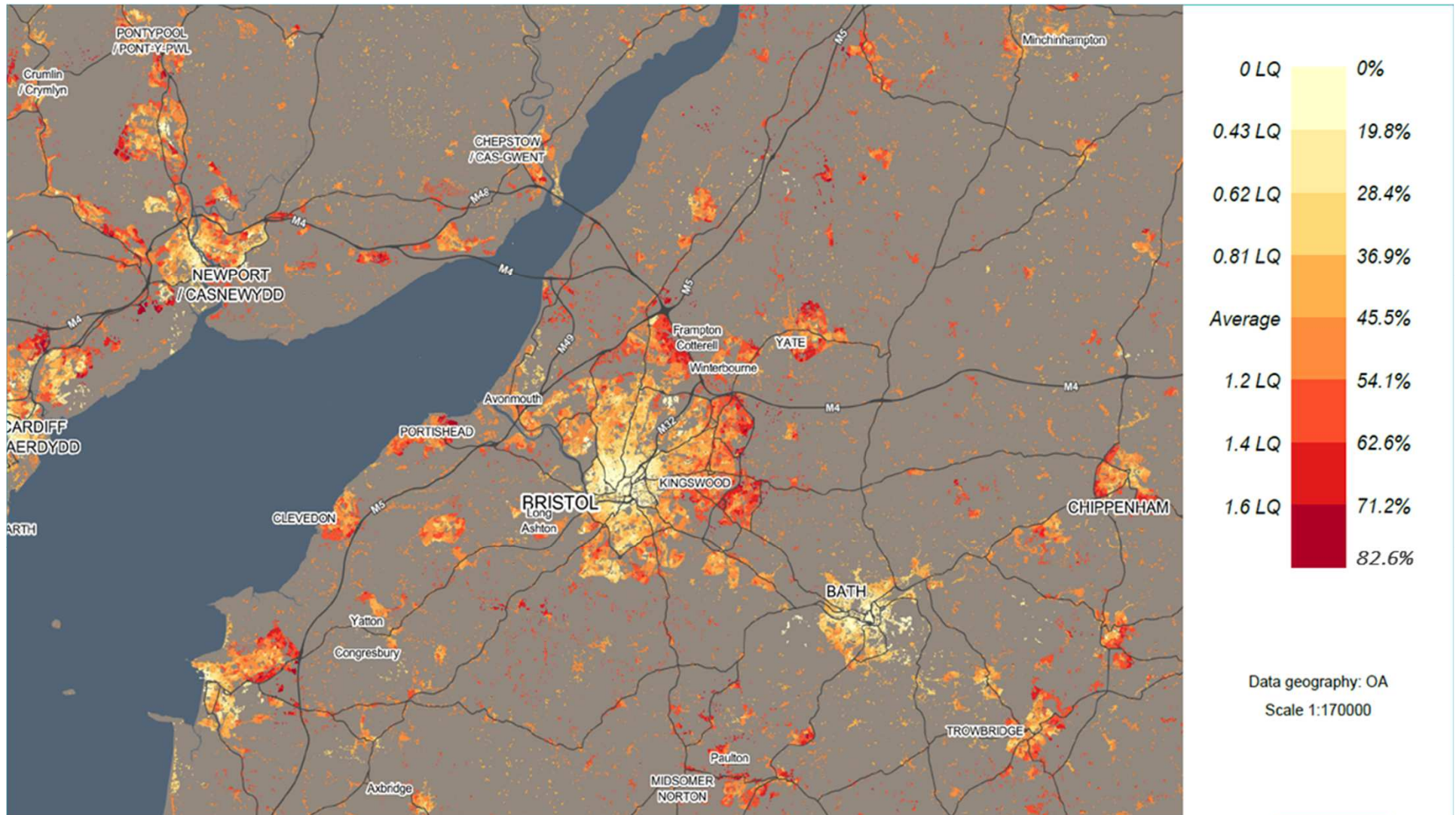


# Our Study Objectives

- Reduce Carbon Emissions
- Support economic growth
- Promote Accessibility
- Contribute to better safety, health and security
- Improve quality of life and a healthy, natural environment



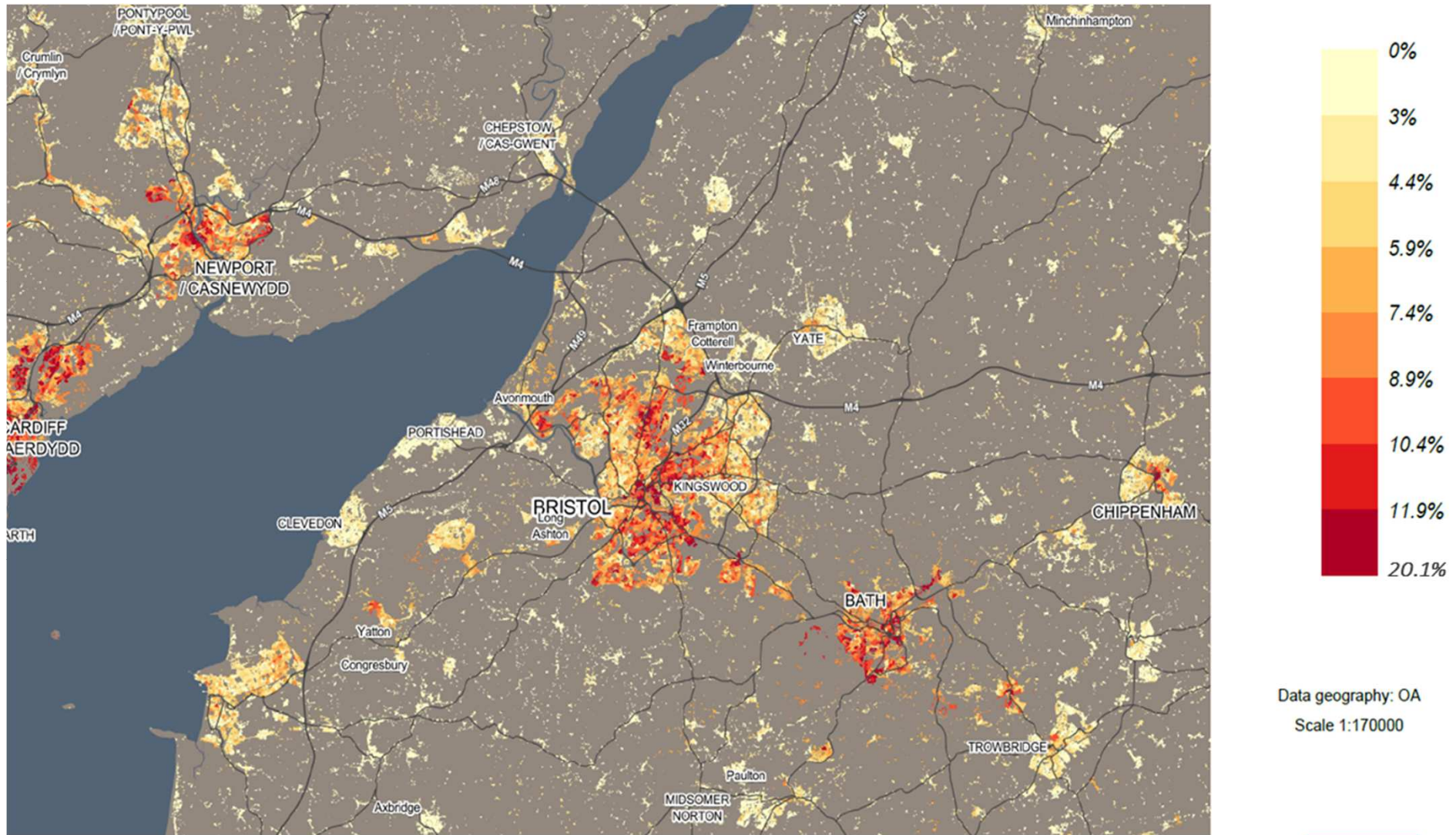
# JSPTS – Car use



Bath and North East Somerset – *The place to live, work and visit*



# JSPTS – Public Transport



Bath and North East Somerset – *The place to live, work and visit*

### Consultation:

Undertaken between 9<sup>th</sup> November 2015  
and 29<sup>th</sup> January 2016

Over 40 consultation/roadshows events

Over 1,000 people attended with many  
more engage through social media.

Full consultation report awaited

## Timetable:

Draft Spatial Plan, including transport investments to address current challenges and forecast development - September 2016

Submission to SoS - Summer 2017



Thank you for listening

Any Questions